

DIABETES AND ENDOCRINOLOGY

UNITED WE STAND, DIVIDED WE FALL

John Wass

Oxford Centre for Diabetes, Endocrinology
and Metabolism
Churchill Hospital
Oxford UK

ABCD April 2005

DIABETES AND ENDOCRINOLOGY

UNITED WE STAND, DIVIDED WE FALL

- Debate
- how our specialty is going to be in the future?
 - how should we adapt?

DIABETES AND ENDOCRINOLOGY UNITED WE STAND, DIVIDED WE FALL

Clinical Service

Post Graduate Education

Research

Recruiting into the specialty

Public Relations

DIABETES AND ENDOCRINOLOGY UNITED WE STAND, DIVIDED WE FALL

Clinical Service

Diabetes and Endocrinology

Increased prevalence of diabetes

Care in the community? No!

Data on - patient preference
- diabetic outcomes

We need more data comparing the two

DIABETES AND ENDOCRINOLOGY

UNITED WE STAND, DIVIDED WE FALL

Clinical Service

Endocrinology

PCOS 10% of premenopausal females

Present to gynaecologists
dermatologists

Osteoporosis 1 in 3 women

1 in 12 men

Many endocrine causes

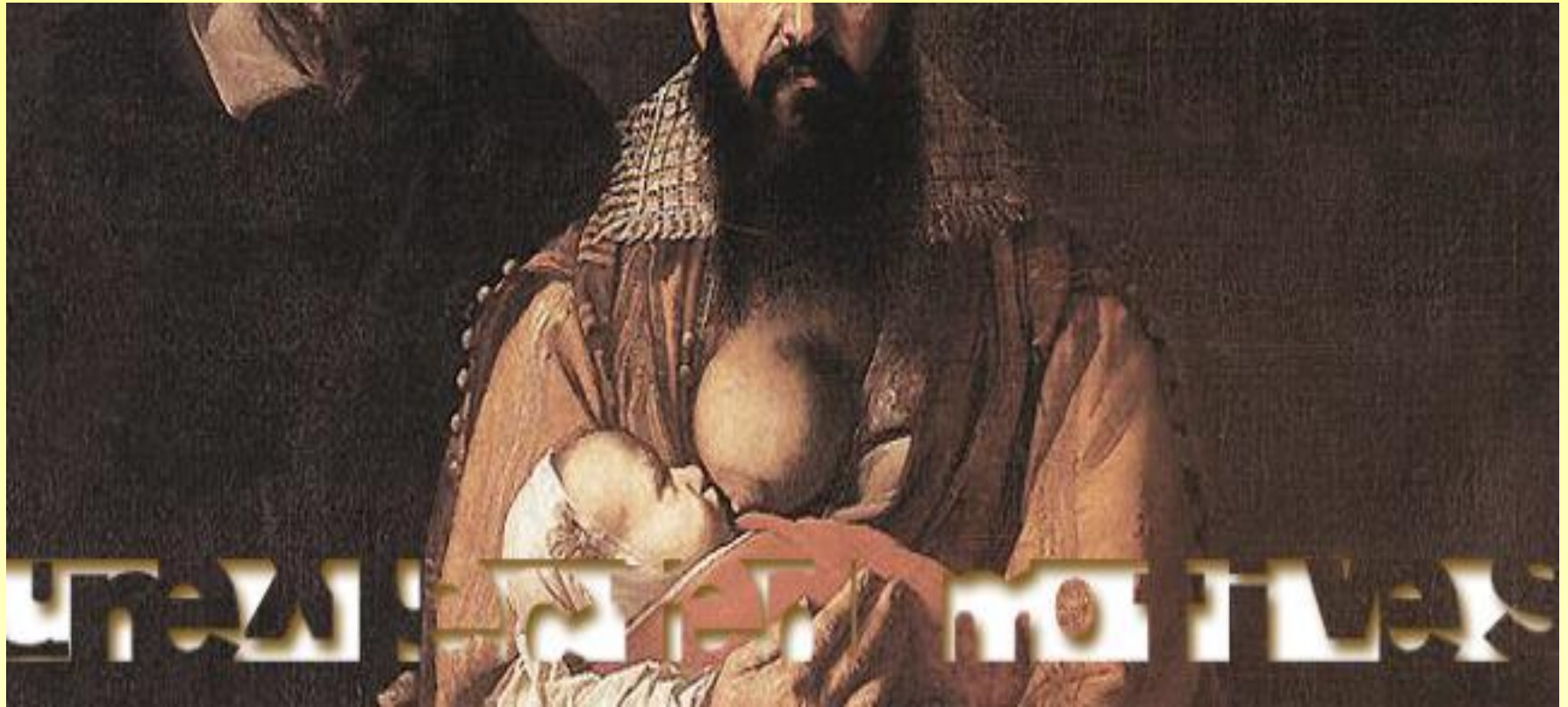
osteoporotic fracture >65 yrs

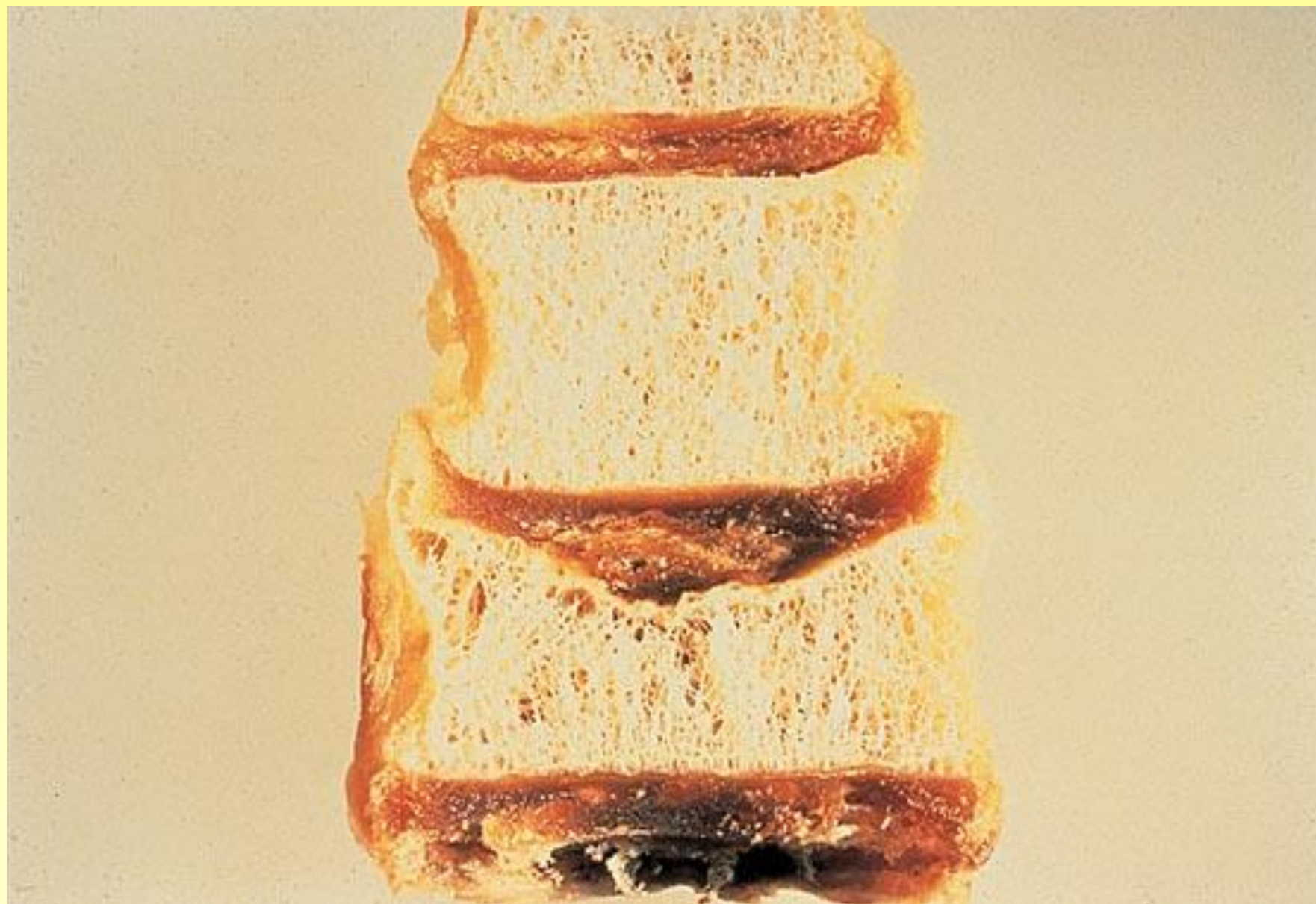
Endocrine effects of cancer treatment

childhood

adulthood

Endocrine hypertension





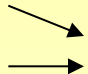
DIABETES AND ENDOCRINOLOGY

UNITED WE STAND, DIVIDED WE FALL

Clinical Service

Endocrinology

PCOS 10% of premenopausal females
present to gynaecologists
dermatologists

Osteoporosis 1 in 3 women
 1 in 12 men  osteoporotic fracture >65 yrs
Many endocrine causes

Endocrine effects of cancer treatment
childhood
adulthood

Endocrine hypertension

DIABETES AND ENDOCRINOLOGY UNITED WE STAND, DIVIDED WE FALL

Close collaboration between hospital
physicians in a region

DIABETES AND ENDOCRINOLOGY

UNITED WE STAND, DIVIDED WE FALL

Where should endocrine conditions be managed

DGH

Thyroid disease

Prolactinoma

Non functioning tumour

PCOS

Hypogonadism

Hyperparathyroidism

Osteoporosis

Tertiary Centre

Cushing's disease

Pancreatic endocrine tumours

MEN

Carcinoid syndrome

Thyroid eye disease

Thyroid cancer

DIABETES AND ENDOCRINOLOGY

UNITED WE STAND, DIVIDED WE FALL

General Medicine

Until aged 50

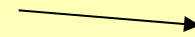
Then specialty medicine

DIABETES AND ENDOCRINOLOGY UNITED WE STAND, DIVIDED WE FALL

Postgraduate Education

Together –

ABCD
Society for
Endocrinology



two meetings
per year

DIABETES AND ENDOCRINOLOGY

UNITED WE STAND, DIVIDED WE FALL

Postgraduate education

What Society for Endocrinology provides:-

BES Meeting	endocrine science clinical science management of clinical conditions
Summer School	advanced endocrine course clinical day debates

Oxford Endocrine Course

Clinical Cases Day Royal Society - February

DIABETES AND ENDOCRINOLOGY UNITED WE STAND, DIVIDED WE FALL

Postgraduate education

Changes afoot – because of EES (European Endocrine Society)

Outcome for UK

September – main BES

March – parallel strands
education in endocrinology & diabetes
special interest groups

DIABETES AND ENDOCRINOLOGY

UNITED WE STAND, DIVIDED WE FALL

Research

Considerable overlap

e.g.. PCOS

Turner's syndrome

DIABETES AND ENDOCRINOLOGY
UNITED WE STAND, DIVIDED WE FALL

Recruiting into the Specialty

Specialist society sponsored days

diabetes

endocrinology

SHO's come free to meetings

present cases

Teaching of all undergraduates

DIABETES AND ENDOCRINOLOGY
UNITED WE STAND, DIVIDED WE FALL

Public Relations

Politics

Parliamentary Science Committee

DIABETES AND ENDOCRINOLOGY UNITED WE STAND, DIVIDED WE FALL

The Future

Diabetes and endocrine conditions – commoner

More data on optimal location of management

Active recruiting into the speciality